

SIDEWALK RAMP SHALL HAVE DETECTABLE WARNINGS PER FDOT STANDARD INDEX 304.  
 SEE "FLORIDA ACCESSIBILITY CODE FOR BUILDING CONSTRUCTION", LATEST EDITION.

3-6" WHITE CHEVRON EQUALLY SPACED PER AISLE

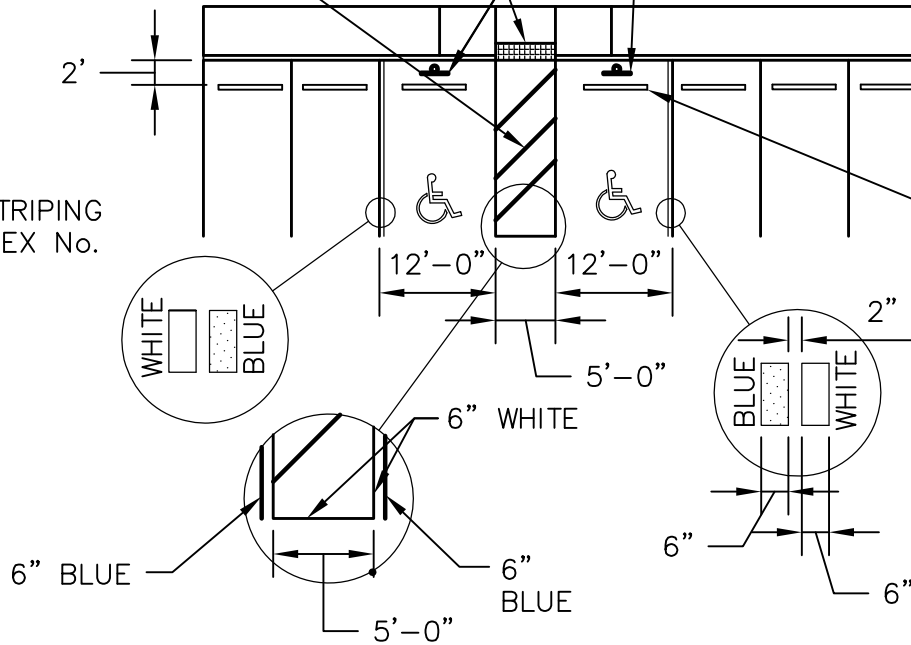
FOR SIGN DETAILS SEE SHEET D-11

MAX. 1:12 TYP.

5' MIN.

NOTE: PAVEMENT MARKINGS AND STRIPING AS PER FDOT INDEX No. 17346.

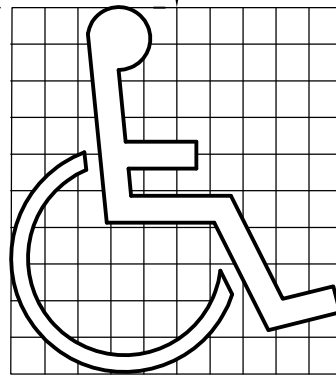
SEE NOTE 7 SHEET D-11



FACE OF CURB OR EDGE OF PAVEMENT

10'

3' OR 5' SQUARE



WHITE ON BLUE BACKGROUND

3' OR 5' SQUARE

MANDATORY

**CITY OF GROVELAND STANDARD DETAILS: STREET & DRAIANGE**



**METZGER & WILLARD, INC.**  
 Civil • Environmental Engineers • Surveyors  
 8600 Hidden River Parkway, Suite 550  
 Tampa, Florida 33637 (813) 977-6005

**DISABLED PARKING & MARKING**  
**TYPICAL DETAILS**

DATE: JULY 7, 2008  
 SCALE: N.T.S.

**D-10**